

THE

GRANT

Sandia Heights Homeowners Association

January - February 2002

9th Annual Wine-Tasting – and More!



This year there will be something for everyone to taste. In addition to fine wines at our annual wine tasting, this year there will be coffees, teas and chais from New Mexico Coffees.

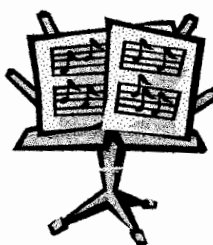
Mark your calendar now: **Saturday, March 16th, 5-7p.m. at Futures for Children, 9600 Tennyson (across from the County Line).**

The Sandia Heights Homeowners Association invites you and your friends to come to this fun event, meet your neighbors, and get a better sense of the unique community in which we live. There is limited parking, so you may want to carpool with your neighbors, or even walk to the event.

Tickets cannot be purchased at the door, so **please register in advance** with this coupon, or through the one in your February water bill.

Please bring an appetizer, or two, and share those brought by others. We'll have lots of food, interesting things to drink, music and great raffle items.

The cost is **\$13 per person** that includes a beautiful wine glass or coffee mug for you to take home. And more glassware will be available for you to purchase.



Sandia Heights – The Peak of Living!

WINE AND COFFEE TASTING RESERVATION:

Saturday, March 16th, 5-7p.m. at Futures for Children, 9600 Tennyson (across from the County Line).
return by March 1, please:

List of who will attend:

Name _____ Name _____

Name _____ Name _____

Address _____

Phone _____

I certify that each person is over 21.

Signature _____

Amount Enclosed _____ (at \$13 per person).

Send check or drop it by to: **(no refunds)**

Wine/Coffee Tasting
SHHA Community Service Committee
2-B, San Rafael, NE
Albuquerque, NM 87122



Please
check here if
you can bring
an appetizer

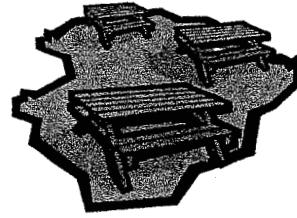


ARCHITECTURAL CONTROL COMMITTEE

For the Committee
By: John M. Coffey, Chair

Since the last issue of the Grit, the Architectural Control Committee (ACC) received 15 new projects for review. Twelve of the projects, consisting of three reroofing, three landscaping, one home addition and one patio cover, were approved. The remaining three projects consisting of one landscaping, one access gate and one patio installation remained under review.

The ACC continues to function under its charter and invites questions or comments from the members. Please convey your comments or questions to Lisa at the SHHA office at 797-7793 or via e-mail to: SHHAACC@aol.com



Parks, New Development, and Government Relations Committee

Chairman: George Connor

Goals and Objective 2001-2002

- Support new development within or near SHHA if residents believe development is appropriate and in accordance with the SHHA master plan.
- Vigorously oppose new development when believed by majority of residents to be inappropriate and when not in concert with SHHA master plan.
- Continue to track and oversee design and future construction of new park on Cedar Hill Road.
- Upgrade and get additional shade for Little Cloud Park.
- Continue to track and report on local Governmental activities that may impact SHHA.
- Work closely with other SHHA committees where items overlay (e.g. trails, weed trimming, etc.).
- Investigate trail use in SHHA and pursue additional legal neighbor forest access if majority of residents' desire.
- Special Assignment – Move enforcement of Quail Ridge Development Covenants from developer to SHHA-ACC.

UPCOMING EVENT

Albuquerque Baroque Players'
next appearance is with guest artist

Michael McCraw,*
Baroque bassoonist and dulcian player

February 25, 2002 at 7:30 pm
At Keller Hall, UNM Fine Arts Building

Program composers include: Fontana, Bertoli, Frescobaldi, Castello, Telemann, and Vivaldi.
Dr. Patrick will perform harpsichord works by Storace and W. F. Bach

Tickets at Popejoy Hall Ticket office and at the door
Adults \$10.00, Seniors [55+] \$7.00,
College age and younger \$3.00

*Mr. McCraw is adjunct Professor of Baroque Bassoon at Indiana University, member of Toronto based Tafelmusik baroque Orchestra for 10 years and has made 150 CD's.



Volunteers Needed!!!

We need volunteers to help with SHHA's 9th Annual Wine Tasting on March 16, 2002.

If interested, please contact SHHA's Office and leave a message for the Community Service and Membership Committee (CSMC). A CSMC member will contact you.



Covenant Support Committee

by Frank Soper, Committee Chair

TREES AND VIEWS

As Sandia Heights approaches 33 years of development, many trees have reached heights which partially block neighbor's views of the city and mountains. Due to the cost of trimming, the majority of property owners let these trees continue to grow uncontrolled and we are seeing many more complaints and neighbor "feuds" as a result.

The Covenants for most units deal with plantings of trees that form a view screen, but do not prevent most single tall trees that become view blockers. Thus we property owners need to be responsible to our neighbors when we plant. One simple guideline is to select trees that will not exceed the 26-foot residence height limit for Bernalillo County.

A valuable reference regarding trees can be found in appendix D of the SHHA 2001 Directory, and will be included in the SHHA 2002 Directory. An additional reference is the "energy works" stuffer that was in our January 2002 PNM bills. This stuffer identifies specific trees within the Tall, Medium and Small categories. The planting of those trees with the Tall category, which includes Ponderosa Pine, Cottonwood, Mulberry, Sycamore, Willow, Ash, Poplar, Elm, Locust and Spruce/Fir is strongly discouraged within Sandia Heights because of their potential to block views. Other sources of information regarding trees types and heights are the PNM tree department (241-3405) and all reputable nursery staffs.

For new construction and remodeling projects, the Architectural Control Committee reviews all associated landscape plans. Quite a few recently submitted plans have required revision, deleting tall trees prior to approval.

Be considerate of your neighbor's views and limit the planting of trees to only those that are within the Medium and Small categories as identified in the noted PNM "energy works" stuffer.



The Finance Committee

By: Rick Nelson, Treasurer

Report for December 2001, the fourth month of our Budget year

Assets and Liabilities as of 12/31/01

Cash and in Banks

In Checking	\$ 10,179.24
In CD	45,585.68
In Petty Cash	100.00
Total Cash and In Banks	\$ 53,474.29

Other Assets

Equipment and Furniture	\$ 10,695.56
Prepaid Postage, Rent, Etc	2,755.13
Security Deposits	1,272.75
Total Other Assets	\$ 14,723.44
Total Assets	\$ 70,588.36

Liabilities

Open Space, Legal and Operating Reserve	\$ 40,585.68
Prepaid 2002 advertising Directory, Grit and Little Grit	12,575.00
Total Liabilities	\$ 53,160.08
Assets less liabilities	\$ 17,428.28

Inflows & Outflows month of December 2001

Inflows

Architectural Control	\$125.00
Advertising	7,275.00
Interest earned	95.79
Members Dues	7,351.83
Total Inflows	\$14,847.62
Holiday Grit	\$1,065.97
Other committee expenses	838.11
Collection of dues	1,050.36
Insurance	4,134.00
Legal	1,083.23
Legal, other	90.00
Office, lease, utility, phone, Internet, supplies, etc.	1,602.63
Office Staff	2,447.60
Total Outflows	\$ 12,311.90

Inflow over outflow for month \$ 2,535.72

Note: Additional legal expense of \$2,101.28 for the Cohn stop work case was billed for December but not received until January and not yet paid.



Watering Tips For Sandia Heights

By Dan Caudillo

Why Water Plants in Fall and Winter?

After all, plants aren't growing and many have entered dormancy. Cold season snows and rains appear to keep the ground moist, so why bother with watering anything?

No one doubts the need to water during the active growing seasons of Spring and Summer. But is it *really* necessary to water during the colder temperatures of Fall and Winter? Yes it is. You will not be watering as often, but if you neglect watering altogether it can result in plants not returning the following Spring. This is especially true for first year plant installations where root systems are still immature.

Benefits of Fall/Winter Watering

Continual watering during the colder times of the year is important to prevent plant loss. However, it will also result in plants exploding with vigorous healthy growth in Spring and blooms beyond your expectations. The reason Fall/Winter watering is beneficial to plants is that roots continue to grow and breathe during the dormant seasons and this requires water to continue these processes. Plants denied water often come out late with stunted growth. Equally fatal however, is the continual high frequency watering of plants in winter. In other words, don't water in Winter as though it is still summertime.

The Solution

The answer is to make adjustments to your watering systems throughout the year. If you have an automatic timer that controls your sprinklers, learn how to program it. This way you'll be less intimidated to make changes when timer adjustments become necessary. Remember your timer doesn't have intelligence and can't determine the proper time to water. It can only do what you program it to do and you'll have to change the program as the seasons change.

Watering Terms

Before we get started with when adjustments are made, let us understand three fundamental watering concepts: watering frequency, watering time-of-day, and watering duration.

Watering Frequency refers to how often water is provided over a period of time (week, month, etc). Changes in frequency should occur as the temperature warms and cools – more often in Summer, less often in Winter, and somewhere in between during Spring and Fall. Regardless of the time of year, always provide your plants with a deep soaking when you determine that water is needed.

It is easy to assume that no watering is needed during the cold months because snowfalls appear to keep the soil moist during most of Winter. But snowfall is usually scant and it takes an average of 8 inches of snow to equal 1 inch of rain. So, if in the month of December, 2.6 inches of snow falls (December's normal average in Sandia Heights) this means your plants have received less than one-third of an inch of water in a 31 day period! That's not a lot of water even if plants are dormant.

Watering Time-of-Day refers to the time of day that watering begins. In Fall and Winter this should be later in the day in order to give ice in irrigation lines a chance to melt before operation. Many people elect to hand water their plants during this time of year because daytime temperatures remain too cold for proper sprinkler operation and they can avoid freeze damage that may rupture irrigation lines. For Spring and Summer, early morning watering is preferred. Watering early allows for best water pressure, winds tend to calmer, and areas do not stay wet too long discouraging fungal growths that can occur with late day watering.

Watering Duration refers to the length of time that a sprinkler is on. This is most important during the first year when plants are newly installed. Younger plants simply do not need long water duration, as do established plants. But as plants become established, the duration becomes constant and normally does not change. Therefore, temperature changes between seasons influence the frequency and time of day to water and not the duration.

A Suggested Year Round Watering Schedule

Although I cannot make recommendations for every watering situation, I have provided a watering schedule for established, medium water use plants. Naturally, lower and higher use plants would require a lesser and greater frequency, respectfully.

1. Extreme cold weather (November to February). Watering time of day should occur between 11:00 AM and 1:00 PM. Do not water past 1:00 PM or water will remain in the system, freeze and possibly rupture irrigation lines. Watering frequency can vary from every 10 to 21 days depending upon the how cold temperatures are and the amount of precipitation. Heavy amounts of rain or snow can allow watering to extend beyond 21 days, but this is rare and occurs only during very wet years. At least ½ inch of rain or 4 inches of snow in a 3-day period of time is required to count as a watering. Never totally shut down an irrigation system in wintertime unless you plan on watering by hand. Water only on clear days when daytime temperatures are above freezing. Note: Watering duration (how long sprinklers stay on) should remain constant throughout the year and be on long enough to deep soak the plants.
2. Late Winter to early Spring (March through April). This is similar to watering in Fall (see #4), where the watering frequency varies from 1 to 2 times a week a week. The time of day to water is also changed to 9:00 AM. Be sure to monitor weather temperatures as it can affect watering frequencies and watering start times. Watering duration does not change.
3. Late Spring and Summer (May through Mid-September). Watering frequency increases to support the active growing period of the year. This frequency occurs 2-3 times a week with a start time of 6:00 AM to 7:00 AM. Temperatures may soar to over 100 °F in mid-Summer, which may require daily watering on some plants. But watch for Monsoon rains (July-August), which may allow a lower watering frequency, especially if rains are heavy and consistent. A half-inch of rainfall over a 24-hour period constitutes a watering and the next watering period can be skipped. Again, the watering duration does not change.
4. Early Fall (late September through October). Watering time-of-day is changed to 9:00 AM and the frequency of watering is reduced to twice weekly. Extended warm weather (Indian Summer) in Fall can affect the watering frequency and more watering may be needed – so, keep an eye on day/night temperature changes. Watering duration does not change.

**INVESTMENT MANAGEMENT
and
RETIREMENT PLANNING WORKSHOPS**

LOCATION:

PAGE 1 ONE

BOOKS, SOFTWARE, NEWS, GIFTS, AND MAGAZINES
11018 Montgomery NE (Corner of Montgomery and Juan Tabo)

BREAKFAST AT THE CAFE
COMPLIMENTS OF PRUDENTIAL SECURITIES,
EVERY WEDNESDAY MORNING @ 8:15 AM

**HANDIWORK INC.
Referral Service**

- Pre-Qualified Contractors & Handymen
- Screened & Scheduled For You
- No Fee To You For Our Service

Free Estimates & Guaranteed Work

Call 275-2758

Serving Sandia Heights Since 1987 • www.Handyskills.com

Steve's

**WINDOW
CLEANING**

Commercial • Residential

CURT BRANCH
292-6487

Since 1980

"If it's worth doing, it's worth doing RIGHT the first time."



Pat Lenzer, CRS
Marlow & Associates
505 269-7272



Prudential

Southwest Realty

6743 Academy Road NE, Ste A
Albuquerque, NM 87109

Ofc 505 797-5555 Fax 505 797-5556

Toll Free 866 797-5556 patstar1@flash.net



An independently owned and operated member of The Prudential Real Estate Affiliates, Inc.



Preferred Plumbing
Heating & Cooling

David Molisee

265-0708

143 Virginia NE

Albuquerque, N.M. 87108

LIC. No. 26067

NO MORE ROOF LEAKS

Roof Replacement

The EX-EL Company, Inc.

'Where Ex-Elence is Essential'

244-3935

www.exelfoam.com

**-Free Estimates -BBB Gold Star Member
-30 Yrs. Experience -20 Yr. Warranty Available**

**BIEN MUR
INDIAN MARKET CENTER**



From the Indian Artist to You

Traditional & Contemporary
Jewelry, Pottery
Kachinas, Fetishes,
Folkart, Rugs,
& More

Owned & Operated
by the Pueblo of Sandia

I-25 & Tramway Rd. Exit 234
821-5400

Comcast

Kurt Kornman

Comcast Online Communications, Inc. Online Sales Representative

4611 Montbel Place NE

Albuquerque, NM 87107

Tel: 505.761.6225 Cell: 505.269.0872

Fax: 505.761.6273

kurt_kornman@cable.comcast.com



SPECIAL REWARDS FOR INFORMATION leading to convictions:
\$2000 for major vandalism in Sandia Heights, \$1000 and \$5000 additional
for arson at 96 Juniper Hill Rd. on Jan 14, 2000. Call the SHHA office
at 797-7793 for more information.

THANK YOU TO ALL OF THE SANDIA HEIGHTS HOMEOWNERS ASSOCIATION ADVERTISERS AND SUPPORTERS!



Selling Sandia Heights

Sharon McCollum

15 Million Dollar Producer
Associate Broker

FREE Market Analysis

Direct Line **(505) 858-8330**

Voicemail/Pager **505 858-8330/822-0080** Res.

Fax **822-0734/1-800-727-3697**

The Vaughan Company Realtors
6703 Academy NE, Suite A • Albuquerque, NM 87109 • 823-6677



858-8330



Selling Albuquerque
For Over 21 years



RE/MAX

Masters

Independently Owned and Operated

Linda Caldwell, CRS, GRI

Associate Broker

6705 Academy Rd., NE, Suite A
Albuquerque, New Mexico 87109

Direct: (505) 796-1351

Office: (505) 883-8979, Fax: 883-9244

Cellular: (505) 269-3635

Toll Free: (800) 753-2231

Email: caldd@aol.com



**Church of the Good Shepherd,
United Church of Christ**

7834 Tennyson, NE
856-1004

Sunday Services 8:30 & 10:30AM

Church School & Nursery 10:30AM

Summer Sunday Service (June-Aug) 9:30AM

*Progressive, Open
& Accepting*

Handbells, Choir, Retreats, Bible Study, & More
NAEYC-Accredited Pre-School

<http://www.cogs-ucc-abq.org>

Sandia Presbyterian Church



Come join us for Worship!

Saturday Contemporary Service 6:00 PM

Sunday Worship 8:10 & 10:30 AM

Christian Education for all ages 9:15 AM

Rev. Dewey Johnson, Pastor

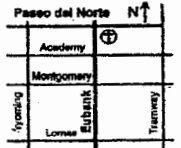
Active youth, adult & ALPHA programs.

Counseling service available to the community.

Preschool Monday through Friday mornings.

www.sandiapres.org/ihs

10704 Paseo del Norte NE, 856-5040



4.5¢ per minute long distance!

24 hours a day - 7 days a week!

Also available:

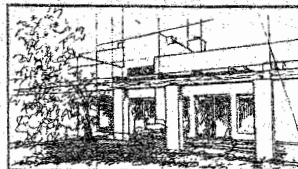
Ronnie Sklarin
GlobalPhoneZone.com

Toll-free numbers for
businesses and homes -
4.5 cents/min incoming

in ABQ:
tel: 822-9002
fax: 822-9003

email: info@GlobalPhoneZone.com
toll-free: 1-877-612-1922

Call for more info!



Lic. # 51199

11910 Del Rey NE
Albuquerque, NM 87122
(505) 856-5233

JEFF SPECK, C.G.R.
General Contractor

JADEnterprises Inc. Design & Construction
www.jadeenterprises.com

REMODELING



Kitchens • Bathrooms • Home Additions

www.remodelingmadeeasy.com

883-4040

Visit One of New Mexico's Largest
Kitchen & Bath Showrooms

2426 Washington NE (2 blks. S. of Menaul)

LIC. #21850

Thomas Smidt II

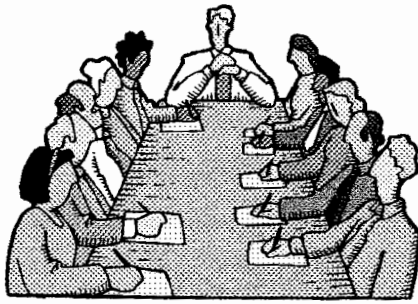
Tax, Estate & Business Law

4217 Montgomery NE
Albuquerque, NM 87109

Tom Smidt, attorney, wishes to thank all of his Sandia Heights client neighbors for their support and referrals over the past 25 years.

505-830-2200

Fax 505-830-4400



BOARD DIRECTORS NEEDED

By: Jack Wolfe, SHHA Vice President

It's time once again to begin seeking candidates to fill forthcoming vacancies on the Sandia Heights Homeowners' Association's (SHHA) Board of Directors (Board). This year there are six Director positions that will need to be filled. The Directors are elected for a three-year term by the SHHA membership at the Annual General Membership Meeting held the first Saturday in June of each year. This year's meeting will be held on June 1st.

What qualifications are required to be a Director? The most important qualifications are the interest and ability (skills and time) to support the mission of the SHHA. This mission is to coordinate planning and implementation of selected services and activities to promote the common interests and welfare of the home and property owners within Sandia Heights and to assist in maintaining the quality of life for which the development was established. Each Director functions as a Board member and also as a member of at least one of the Board's major committees. A complete list of major committees and their general responsibilities is contained in the yellow pages of the SHHA's 2001 Directory of Residents

The Board continues to pursue having at least one representative from each of the 12 "Districts" within Sandia Heights. It's felt that such representation is necessary to ensure that the interests, concerns and etc. of those within each District are represented on and recognized by the Board.

This year the Board is looking for one representative from each of the Districts noted below. The specific "Units" encompassed within each of these Districts is as noted.

District	Encompassed Units
Sandia	0, 1, 2 & 3 North
Juniper	1 & 2 South
Live Oak	3 & 4
Cedar	7 (partial)
Pinon	18, 21, 23, 24 & 25
Bear	26, 27 & 28

Note: See the Map on pages 8 and 9 of this Grit.

If you reside in one of the above noted Districts and are interested in joining your SHHA's BOD, I would ask you to begin thinking about developing a short resume reflecting your pertinent skills and experience that would be of value to the SHHA. And if you have any questions on becoming a candidate for the Board, please do not hesitate to call the office at 797-7793.

Watch for more articles on this subject to appear in your Grit as the General Membership Meeting and election of Directors draws close.

Traffic and Safety Committee

Eric Nuttall, Chair



Since June 2001 the Traffic and Safety Committee continues to focus on two key issues: road/pedestrian safety and neighborhood security. This committee meets the last Thursday of each month, 6:00 pm at the SHHA office on San Rafael. You are invited and welcome to participate as an ad hoc committee member!

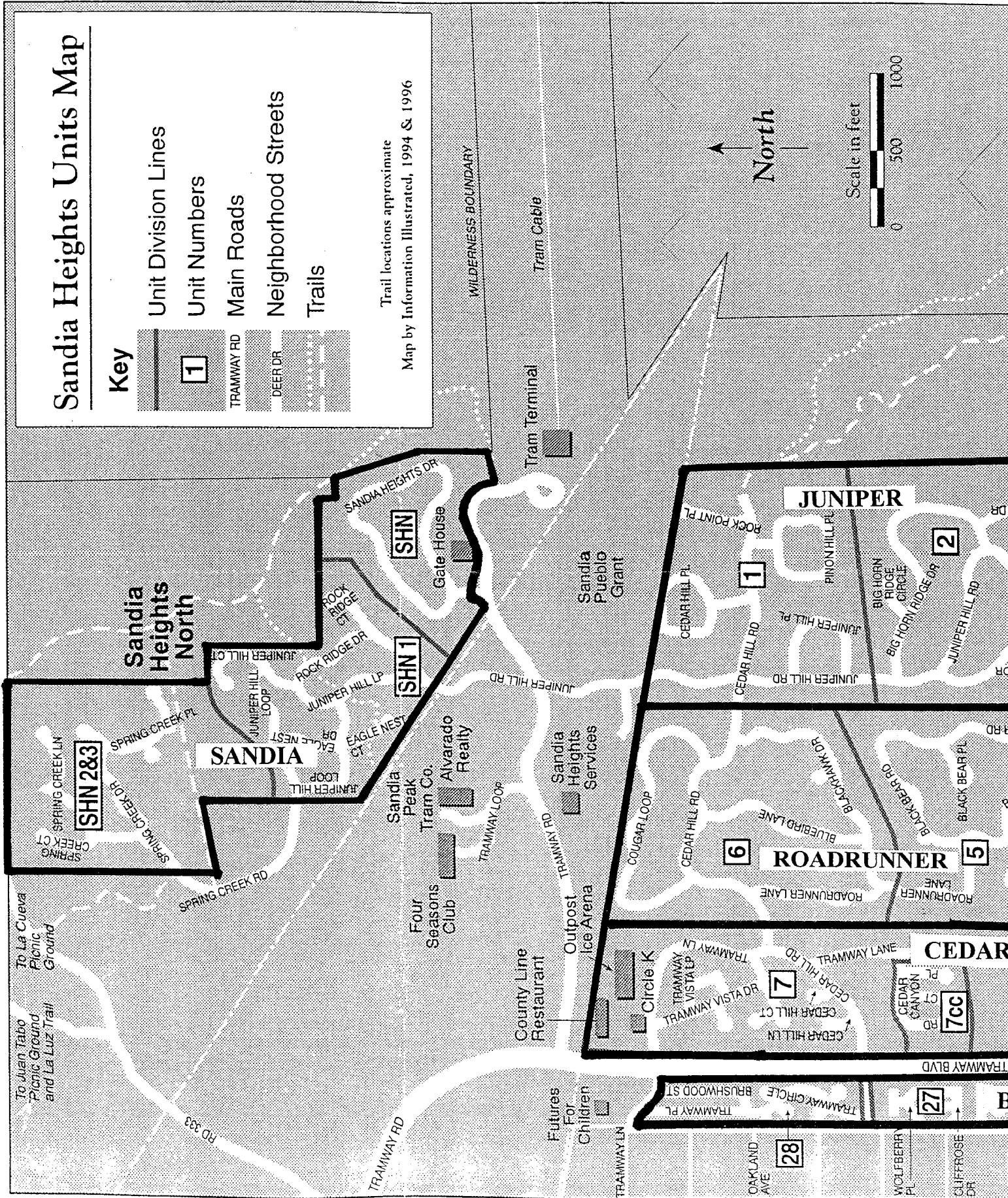
Initiatives for road safety include a review of traffic calming methods, a survey on San Rafael by the County of speeds and traffic count over a three day period, a review of speed and traffic signs throughout Sandia Heights, periodic deployment of a smart speed cart on major access roads,

approval of 15 mph speed humps, increased traffic patrol by the Sheriff's Department, a multi-phase campaign to have the chamisa and elms removed along our roads, and development of pedestrian pathways along certain key roads.

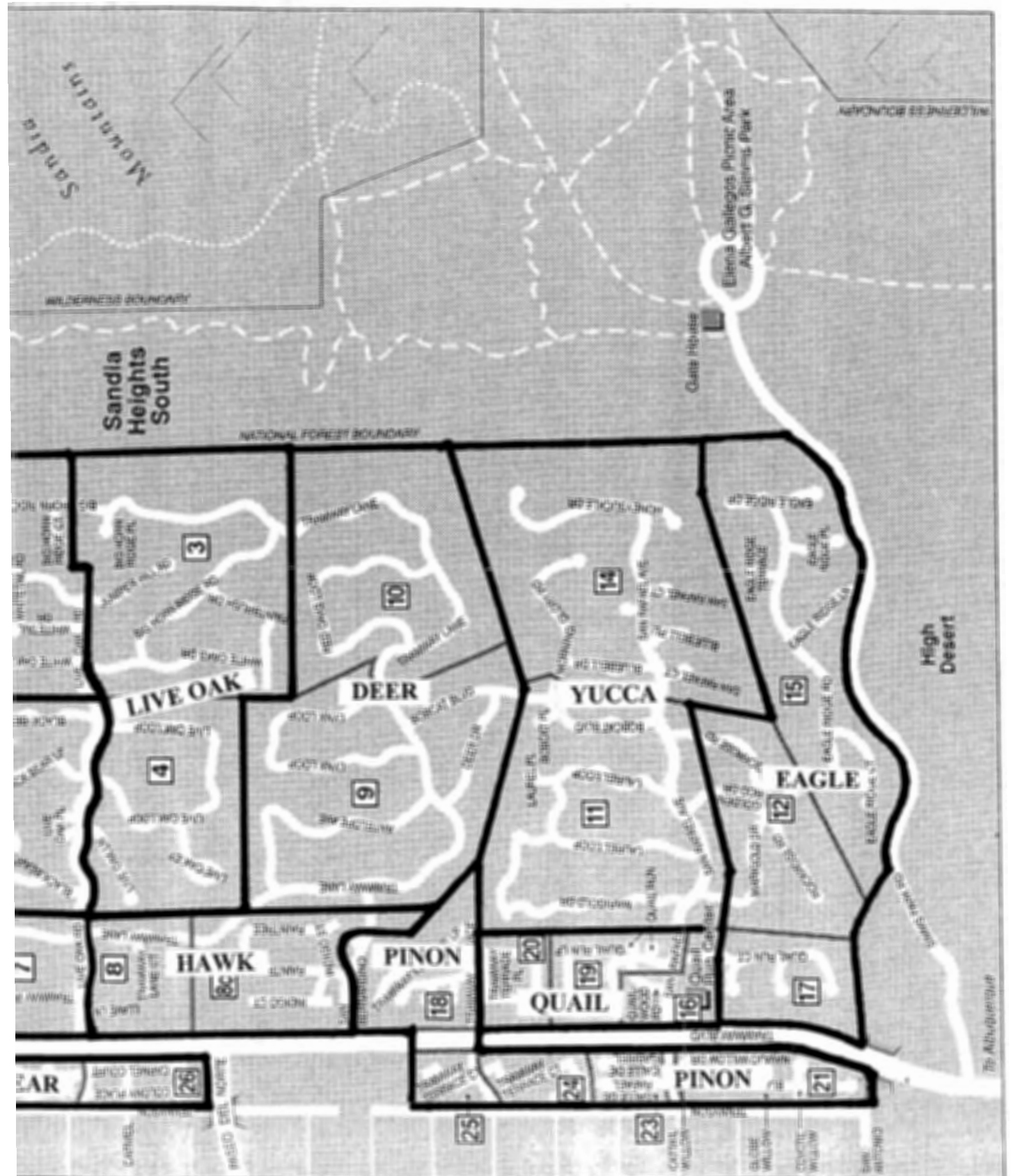
Traffic calming and improved pedestrian safety will be a priority during the next six months. An extensive effort is underway by the County to trim chamisa and elms over the next several months or as the County's schedule permits. Those homeowners who feel that a 15 mph speed hump on their road would be helpful to control speeds and improve road safety may contact the SHHA office (797-7793 or shha@sandiahomeowners.org) and pick up an application packet.

Initiatives for security include: a survey of homeowners and a published summary of our findings in the last Grit, discussions with our security patrol and the Sheriff's Department to improved effectiveness. Although we live in a relatively low crime community, we are still subjected to vandalism, burglaries, arson, and other common crimes. Vandalism and burglaries have been on the increase and this may reflect a trend but it is a bit too soon to know for sure.

Sandia Heights Districts



for Board Representation





Gardener's Calendar

By Dan Caudillo

Early February

- Prepare vegetable/flower beds now by tilling in mulches for future Spring plantings.
- Apply last application of winterizer fertilizer to lawns, shrubs, and trees.
- Finish up Fall/Winter clean-up chores, pruning and raking. Cut perennials to the ground, shape trees and shrubs except early bloomers such as lilac, forsythia, and wisteria.
- Thin and headback fruit trees up to the end of February.
- Check watering frequency for this time of year. Deep soak every 10 to 21 days, depending upon plants.

Mid-February

- Start seedlings of cool season vegetables indoors. Use quality seed starter mixes for lettuce, broccoli, brussel sprouts, kohlrabi and cabbage.
- Cut branches of early blooming shrubs/trees, bring indoors, and place in a vase. In two weeks blooms will appear. Forsythia, deciduous magnolias, and many fruit and ornamental trees work well.
- Begin to dormant spray fruit trees with lime-sulphur and a second time in early March.
- Plant sweet pea seeds.
- Allergy season begins first with one-seed junipers and Siberian elms.
- Don't forget your Valentine this year or it can get you in a lot of trouble

Late February

- Check plants (especially coniferous types) for winter aphids. Outer leaves have a shiny residue and the ground beneath looks wet.
- What is blooming in February? Winter jasmine (shrub); Crocus (bulb)

Early March

- Apply second application of dormant spray to fruit trees.
- Plant pansies now.
- Tomato plants become available. Repot in a larger pot and set indoors by a sunny window.

Mid-March

- Fertilize cool season lawns (Kentucky blue grass and fescues) with a growth food. If weeds were a problem for you last year, use a fertilizer that contains a pre-emergent.
- Plant cool season vegetables and annuals. If you started them inside as seeds, harden them off gradually to properly acclimate them to the outdoors.
- Prune rose bushes now up to the first week in April. Leave climbers until after they bloom. Do not feed yet.
- Plant onion sets after the 15th of March.
- This is a great time to install any hardscape items (flagstone, boulders, ponds, ramadas, walls, gravel, or concrete projects) in the new garden area that you planned last month.
- As temperatures begin to warm, the watering frequency may need to be increased to about 1 to 2 times a week.

Late March

- Plant strawberries, rhubarb, asparagus, and bramble fruits such as raspberries.
- Many cold hardy perennials become available at local nurseries.
- Seed, re-seed or sod cool season grasses (Kentucky blue grass and fescues).
- What is blooming in March? Bradford pear, apricots, and purple-leaf plum (trees); Forsythia, rosemary (some), and flowering almond (shrubs); Pasque flower (perennial); Hyacinth and daffodils (bulbs); Snapdragons, primrose, stocks, pansy, and viola (annuals).



A.S.A.P. Mortgage Inc.

Salvador E. Chavez
Mortgage Specialist
Mobil 505.934.4682
Se habla espanol
We can help you

Michele Marie Munson
Mortgage Specialist
Mobil 505.228.8405
Rates at an all time low
Excelent time to refinance



2301 San Pedro NE • Albuquerque, NM 87110

JAFRA



ANNE GROLLMAN
Independent Skin Care Consultant

726-14 Tramway Vista Dr. NE
Albuquerque, NM 87122
(505) 822-9105
(888) 590-2544-Toll-Free
SouthWestFaces@aol.com
www.myjafra.com/agrollman



THE VAUGHAN
COMPANY REALTORS

ED COHEN

Realtor
BUYING/SELLING
Call for FREE Market Analysis

EddieCohen@aol.com
www.vaughancompany.com
OFFICE 505 275-4000

MOBILE 505 220-6469
FAX 505 275-4099
TOLL-FREE 800 288-1319



10555 Montgomery Blvd. NE, Bldg. 2, Suite 120 • Albuquerque, NM 87109



Selling
Sandia Heights

Judson McCollum

10 Million Dollar Producer
Associate Broker

FREE Market Analysis

Direct Line (505) 858-8328

Voicemail/Pager 505 858-8328/822-0080 Res.

Fax 822-0734/1-800-727-3697

The Vaughan Company Realtors
6703 Academy NE, Suite A • Albuquerque, NM 87109 • 823-6677



858-8328

HIS AND HERS BUSINESS

HE DOES:

SHE DOES:

-WINDOW WASHING -UPHOLSTERY
-HANDYMAN WORK 30 YRS. EXP.

RELIABLE – REASONABLE

286-7575

GREGG & CO.

DIAMONDS-FINE JEWELRY-ART



822-9280

Representing fine artists
to bring you exceptional
original jewelry and fine art.

Full service jewelry repairs.

M-F 10-6 / SA 10-4 • 5901-M Wyoming Blvd. N.E. • Albuquerque, NM 87109
Located next to Tomato Cafe in the North Towne Plaza Shopping Center, Wyoming and Academy



GE Financial Assurance

Rob Piggott
New Mexico Long Term Care Specialist

Long Term Care Division
505 Black Bear Loop, Albuquerque, NM 87122
505-797-2596 Fax 505-797-8924
General Electric Capital Assurance Company

SAVE 20% ON ALL OUTDOOR
POTTERY



Jackalope



Albuquerque/Bernalillo
on US 550(old NM44)
867-9813

Jackalope Indoor Market
8520 Pan American Hwy
821-6500

Offer expires 12/31/02. Not good in conjunction with any other special offer or sale.

FREE CLASSIFIED ADS FOR MEMBER'S CHILDREN

To place an ad for member's children please call the SHHA office at 797-7793 or send a text copy of the ad to: SHHA@sandiahomeowners.org. Office hours are 11AM-3PM Monday through Friday.

THE **GRIT**

published bi-monthly
as the official newsletter of the

**SANDIA HEIGHTS
HOMEOWNERS ASSOCIATION**
2B, San Rafael, NE
Albuquerque, NM 87122

Phone: 505-797-7793
Fax: 505-856-8544

Email:
shha@sandiahomeowners.org

Web Page:
www.sandiahomeowners.org/

Editorial Staff
Communications & Publications
Jim Cook, Chair

Production
Rick Nelson

SHHA OFFICE
2B San Rafael, NE
Sandia Heights

New Hours
11 am to 3 pm
Monday thru Friday

Staff
James Anderson and
Lisa Jacobsen

The Board Of Directors

Don Aunapu, President
Jack Wolfe, Vice Pres.
Glenn Kuswa, Secretary
Rick Nelson, Treasurer
L.A. Bannowsky
Mark Boslough
Dick Brackett
Jake Chavez
John Coffey
George Connor
Jim Cook
Larry Desonier
Bob Francis
Ruth Frazier
Scott Frederick
Richard Frederiksen
Astrid Lugowski
Finian Murphy
Eric Nuttall
Ken Reidy
Judy Schwery
Frank Soper

Club Postings

Information about existing groups and
requests to start new groups.



Scrabble: a fan married to
confirmed non-Scrabbler
looking for three people to set up
monthly or bimonthly games. Prefer
people who are fairly good players,
yet consider the fun of playing more
important than winning. Rotate pro-
viding location. Rotate or share pro-
viding snacks and drinks. Leave mes-
sage at 797-0561.



Computers: Hello.
My name is Jim Cook and I've just
recently moved to Sandia Heights
from Seattle, Washington. I'm in-
terested in starting or finding a
Sandia Heights Computer Club if one
already exists. Please leave a message
at the SHHA office 797-7793 or send
email to grit@sandiahomeowners.org
if you know of a club or would like to
form one.



Sandia Heights Wildflower Club



March meeting is scheduled
for Wednesday March 20th at 7:30 at
the home of Jan and Dick Stumph:
232 Sprint Creek Court, NE.

Guest speaker is Ms. June
Ballog. Her presentation is: "Flower
Garden Design". This presentation
includes flower arrangements, and the
members and guests are encouraged to
bring flowers and or small shrubberies
cut from their own gardens.

Sandia Heights residents are
welcome to attend any of the bi-
monthly meetings.

To become a member, please
send a check for \$5 payable to the
Sandia Heights Wildflower Club to
Susan Cook, 1842 Tramway Terrace
Lp, Albuquerque, NM 87122 to cover
dues for one year.

CLASSIFIED ADS Free for SHHA Members

WANTED

Boulders, Yes, boulders!!!!
Preferably large ones!!!!!! If you need to
remove rocks for any reason, Please call:

Doug Flax
856-3406
Thanks!!!

EXPERIENCED 13 YEAR OLD WORKER

Good for doing odd jobs around the house
while you are away. Watering, picking up
mail, taking care of pets and
MUCH MORE.

Call 856-1483 and ask for **Jordan**

12 YEAR OLD GIRL

With YMCA Baby sitting training
Available for baby sitting and pet care
Contact

Hilary
At 856-7023

13 YEAR OLD BOY

With Boy Scout Training and
10 YEAR OLD SISTER
Available for babysitting and house sitting
Contact

Patrick or Calisa
At 856-1283

EXPERIENCED 15 YEAR OLD BABYSITTER

Great with kids.
Available after school and on weekends.

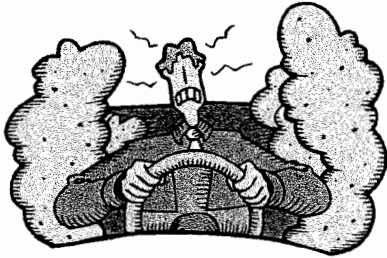
Call 821-0482
and ask for
Becky



Volunteers Needed!!!

We need volunteers to help with
SHHA's "9th Annual Wine Tasting" on
March 16, 2002.

If interested, please contact
SHHA's Office and leave a message for
the Community Service and Membership
Committee (CSMC). A CSMC member
will contact you.



THE RUSH TO NOWHERE

Name withheld by request.

It started out as one of those days---too many things to do and not enough time to do them. My husband and I were having a party at our house located in a rural part of Tennessee. The roads are narrow and winding with beautiful maples and dogwoods lining the sides. It makes for a pretty drive but it's hard to see the people walking on the roads (there are no sidewalks). (Around here the speed limit signs are mostly ignored and the speed bumps just made you go faster to make up for lost time.)

I couldn't believe that with just a half an hour before guests arrived, I had forgotten to get crushed ice. It was getting darker as I rushed down the road to the store, traveling at a faster speed than I should have but I had to get the ice in time for the party. As I rounded a curve that I've traveled a hundred times before, something appeared in front of me on the road. I hardly had time to get my foot on the brake when I hit the objects. I remember my feeling as I stopped the car to see what happened. I knew that those things I hit were people but your mind can make you believe they were deer, or trash that fell out of a truck. As I looked in the rear view mirror, I could immediately see the reflection from the twisted wreckage that looked (in my mind) like a chrome chair. A few feet away was a young woman who was unable to walk normally but was limping towards the metal wreckage. As I rushed to help her, the most horrible image met me about ten yards from the scene---That chrome chair was a stroller! Even now it's still hard for me to think of that moment of realization---part of me wanted to get into my car and leave, hoping that somehow everything would fix itself but I stayed to face the reality of what I had caused.

Although I wanted to help, I was unable to move from that spot, as if my feet were frozen to the ground. As the woman struggled towards

that twisted piece of steel, I still had hopes that this lady, like other people I've seen, just used the stroller to carry groceries. But that hope was dashed when she pulled the small lifeless form out of the stroller (it was a two-year-old girl). She looked at her child, then let out a scream that sounded almost non-human. It was then that I knew that I did the unthinkable---taking the life of a child.

After the ambulance and police arrived, taking all sorts of measurements and reports, I was charged with vehicular homicide, due to the excessive speed. After years of spending time in courtrooms, and paying lots of attorney's fees, I did not have to go to prison for my deed. However, we did go bankrupt with the lawsuits and had to sell our house but it didn't matter since the neighbors hardly spoke to me after the incident. Something this tragic doesn't leave the mind unscathed. I became continually depressed, and three years after the accident, my husband and I divorced. A year after our divorce, I tried to take my own life with sleeping pills, although I couldn't even do that right. Now I try to stay awake as long as possible because the cruelty of the night, and nightmares, makes me replay that horrible day over and over again. Sometimes in my dreams, I actually swerve and miss the mother and child, and when I awake I believe that really happened-----for a few seconds. Then the cruelties of reality take over and it becomes the survival of another day. The worst part of my nightmares is seeing that woman when she realizes she will never hold her child again, never celebrate her birthdays, never see her get married and have children. And when she looked up at me with that twisted face that telegraphed the unbelievable pain that no mother should ever experience---it is too much to bear. I tried to blame that woman walking in the road, or my husband who should have gone to get the ice, or those damn trees along the road. But it does no good because for whatever reason I am the blame, and now I suffer the worst possible Hell everyday of my life.





Covenant Support Committee

Frank Soper, Chair

At the last meeting the Committee agreed that upon verification of a legitimate complaint assigned members will directly contact the violator to resolve, in lieu of sending a form letter. If the violator refused to cooperate, we will initiate documentation per procedures.

To assure buyers' awareness of Covenants prior to purchase, the Committee will contact the Albuquerque Board of Realtors 7 major brokers active in Sandia Heights (Coldwell Banker, Vaughn, Pargin, etc.) specifically requesting their full cooperation as a part of listing a property.

To report a perceived Covenants violation you must fill out a complaint form at the SHHA Office. No anonymous complaints will be accepted for action by the Committee.



Communications and Publications Committee

Committee

Jim Cook, Chair



The December 2001 Grit was the last grit on the old publishing schedule. Starting with this issue, we will publish the Grit every other month starting in January rather than February. This will synchronize the Grit better with SHHA events such as the Annual Meeting in June. We welcome a new volunteer writer in this issue, Dan Caudillo, who authored the two articles on gardening. Let us know what other topics you would like to have us cover.

We're also working on completing the revisions to the Resident's Guide and getting ready to publish the 2002 Directory of Residents. Because of the change in the Grit's publishing schedule and the work on the Resident's Guide and Directory the last couple of months have been focused on print publications. Over the next several months, we're going to be working on updating the material on the website. Please send us your comments on the SHHA website and what material would make it more useful for you.

Security's mobile number
263-4654
SANDIA HEIGHTS SECURITY
 (A division of Sandia Service
 Phone 857-8924)

	Dec	YTD	Dec	YTD
Attempted Breaking & Entering	0	7	0.0%	0.4%
Breaking & Entering	1	4	2.3%	0.2%
Animal Control Assist	2	15	0.0%	0.9%
Alarms	39	488	28.0%	27.8%
Assault/Battery	0	5	0.8%	0.3%
Car Accident	8	27	5.2%	1.5%
Construction Site Burglary	1	7	0.7%	0.4%
Deer Hunters	0	0	0.0%	0.0%
Fire	4	25	2.6%	1.4%
Fireworks Complaint	0	8	0.0%	0.5%
Front Office	1	30	0.7%	1.7%
Loud Music	0	0	0.0%	0.0%
Lost/Found Item	0	5	0.0%	0.3%
Lost/Found Pet	4	30	2.6%	1.7%
Motorist Assist	17	203	11.1%	11.6%
Motorcycle Nuisance	1	12	0.7%	0.7%
Open Door/Window	12	100	7.8%	5.7%
Peeping Tom	0	1	0.0%	0.1%
Pet Nuisance	2	42	1.3%	2.4%
Loud Disruptive Party	1	15	0.7%	0.9%
Rescue Assist	1	10	0.7%	0.6%
Snake Call	0	46	0.0%	2.6%
Speeding Vehicle	1	20	0.7%	1.1%
Suspicious Person	4	81	2.6%	4.6%
Suspicious Vehicle	21	195	13.7%	11.1%
Salesman Problem	4	43	2.6%	2.5%
Theft	1	20	0.7%	1.1%
Threat/Personal	0	4	0.0%	0.2%
Utility Co. Assist	2	35	1.3%	2.0%
Special Request	8	108	5.2%	6.2%
Vandalism	18	148	11.8%	8.4%
Wildlife Report	0	21	0.0%	1.2%
Subtotal of Calls	153	1755	100.0%	100.0%
Special (Extra patrol or observation)	20	147		
Homeowners on Vacation	196	1961		
Total Calls	369	3863		
Vehicle start mileage	46131	2789		
Vehicle end mileage	50024	50024		
	3893	47235		

A Reminder
Sandia Heights Security
 is not
 a part of SHHA
 The service is not included in your SHHA dues.
 You may have the protection of,
 or information about
Sandia Heights Security
 by calling 856-6347 or 857-8924

If you are not an SHHA member please join, your help and support will be greatly appreciated by your neighbors. \$5.00 is the small monthly fee. Call 797-7793 to join.

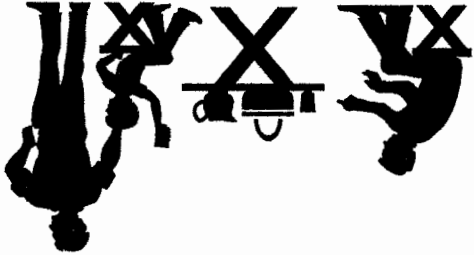
All this was a great start. Let's do it again next year. Anderson Organizing Systems will again make electric luminarias available to SH residents at wholesale prices. What would you like to volunteer to add to the effort? This is a project that enhances the aesthetics of our neighborhood and honors the covenants and the wishes of the residents by keeping illumination levels low. Increased participation in the future could make Sandia Heights special in still one more way. It could also be a project that is fun to do and just plain beautiful to see.

3667
 The holiday paper we printed it on - by calling Kit at 856-3667. You can still get a copy - although we're out of Luminaria from our more experienced neighbors was also a list of suggestions regarding set up and use of picked them up and helped with distribution. electric luminaria sets at the wholesale price and volunteers went off without a hitch. A couple of dozen families bought mitter, the First Annual Sandia Heights Luminaria project auspices of the Community Service and Membership Committee, just a bit more beautiful this past holiday season. Under the You did, of course, notice that Sandia Heights was

Lights in the Heights

By: Kit Anderson

The Community Service and Membership Committee (CSMC) would like to start a tradition of kicking off the Summer with a family picnic for all residents of Sandia Heights. Anyone interested in helping to plan and develop this picnic, please contact SHHA's office. A member of the CSMC will contact you. We hope that we have sufficient interest to have a picnic at the end of May or the beginning of June.



Anyone for a Picnic???



Sandia Heights Homeowners Association
 2-B San Rafael, NE
 Albuquerque, NM 87122
 (505) 797-7793
 SHHA @ sandiahomeowners.org

**PRESORTED STD.
 U.S. POSTAGE
 PAID
 PERMIT #375
 ALBUQUERQUE, NM**



*****ECRWSS**C-009
 John & Viola Miller 12
 548 BLACK BEAR RD NE 12
 ALBUQUERQUE NM 87122-1816