

THE

GRIT

Sandia Heights Homeowners Association

October 2004

## PHOTO CONTEST!

The SHHA is having a photo contest for 2005 Sandia Heights Resident Directory. Please submit your best photo to the SHHA office by November 20<sup>th</sup> a decision will be made in December. If you are the lucky winner your photo will be featured on the cover of the 2005 Directory.

- Photos must be related to the Sandia Heights area, reference 2004 Directory
- Photos must be able to reasonably fit on the cover of the directory
- Photos can be submitted either digitally or as a hard copy
- Be creative and good luck!

## Notes from the Editor:

Contractor Evaluations are a very helpful tool for our residents. If you've had work done on your house please complete and send it an evaluation form. The forms are available through our office or on our web site. Most of the evaluations currently on hand are dated from year 2001. Our goal is to publish a list of these evaluations on our web site but in order to do that we would like to provide you with some updated information. So your contribution is greatly appreciated.

If you are submitting a letter to the editor please make sure you provide your address and a daytime phone number. Letters to the editor will be subject to revision and placed as we have space available.



**HAPPY HALLOWEEN!**

## Neighborhood Announcements:

- SHHA Board Meeting – October 13th at 7pm
- **Town Meeting Saturday for members only, October 16<sup>th</sup> from 10am to 1pm at the Church of the Good Shepherd**
- Office Hours are from 9am to 3pm, Monday through Friday
- **We now have a notary public in the office. These services are free to members only. Please call to make an appointment.**
- Check out the SHHA website at: [Sandiahomeowners.org](http://Sandiahomeowners.org) for updates and neighborhood resources.

**TREASURER'S REPORT**  
By: Cheryl Iverson – Treasurer

<b>CASH FLOW – August 2004</b>	
<b>RECEIVED</b>	
ACC	\$430.00
Member Dues	\$11,644.69
<b>Total Received</b>	<b>\$12,074.69</b>
<b>EXPENSES</b>	
<u>Committee Expense</u>	
Legal	
CSC (new covenant research)	\$920.20
Communications	
Grit costs	\$1,411.95
<b>Total Committee Expenses</b>	<b>\$2,332.15</b>
<u>Office Expense</u>	
Comcast	\$59.34
Computer Repairs	\$833.28
Electricity	\$93.14
Office Lease	\$933.86
Postage for Bulk Mailings	\$1,000
Security	\$11.59
Supplies	\$113.02
Telephone	\$88.31
<b>Total Office Expense</b>	<b>\$3,132.54</b>
Office Staff	\$2,662.74
Sandia Services	\$1,116.53
<b>Total Disbursed</b>	<b>\$9,243.96</b>
<b>Received less disbursed</b>	<b>\$2,830.73</b>

<b>Condition August 31, 2004</b>	
Cash in Banks	
Checking	\$52,316.74
CD	\$33,994.83
Petty Cash	\$102.64
<b>Total Cash in Bank</b>	<b>\$86,414.21</b>
<b>Other Assets (at Cost)</b>	
Computers & software	\$5,023.46
Due from Advertising Sold	\$0.00
Event Signs	\$164.54
Holiday Decorations	\$77.25
Inv Glass/Mugs	\$749.09
Office Accessories	\$1,207.06
Office Furniture	\$5,396.44
Postage in meter	\$420.94
Postage Bulk	\$904.68
Prepaid Rent	\$991.10
Security Deposits	\$1,075.75
<b>Total Other Assets</b>	<b>\$16,010.31</b>
<b>Total Assets</b>	<b>\$102,424.52</b>
<b>Liabilities</b>	
Prepaid Advertising	\$8,758.42
Legal Reserve	\$20,000.00
Legal Covenant Review	\$0.00
<b>Total Liabilities</b>	<b>\$28,758.42</b>
<b>Cash in Banks</b>	<b>\$57,655.79</b>

## Arts View @ Sandia Heights

Sunday October 24, 2004 1:00-5:00 PM

All Sandia Heights residents and their guests are welcome.

---

### Don DeGasperi, 975 Antelope NE

Medium: Acrylic

Don is a self-taught artist. He retired from the U.S. Air Force and Los Alamos National Lab and moved to Sandia Heights in 1991. Don is a member of the American Association of Aviation Artists. Many of his paintings have appeared in



aviation magazines and juried shows. Don also designs and builds electric remote-controlled airplanes.

---

### Lynda Burch, 369 Big Horn Ridge Dr. NE

Medium: Watercolor

Lynda is a native of Texas who moved here in 1981. She is a Signature Member of the New Mexico Watercolor Society and the Arizona Watercolor Society. She has been juried into many shows throughout the Southwest in the last few years. She is currently showing in the Nob Hill Art Gallery Artist Coop, the Yucca Art Gallery in Albuquerque, and the Mineral and Fossil Gallery in Santa Fe and Taos. Lynda likes “using color in a big vibrant way,



creating moods to set the tone of the work.”

---

### Linda Manion, 2876 Brushwood St.

Medium: Pencil



Linda is a self-taught artist, known for the sensitive and personal quality of her work. She began her pencil artistry as a child. Linda offers commissioned portraits of animals, children, and family compositions. Working from photographs, Linda's drawings are truly portraits of individuals, exploring the range of personality and individuality of each subject. The setting of the Southwest continues to inspire her work.

---

### Stanley N. Schmidt, 656 Roadrunner Lane NE

Medium: Wood

Stan's plunge into the commercial stringed instrument market started in 1998, with much additional technical research accompanied by intense

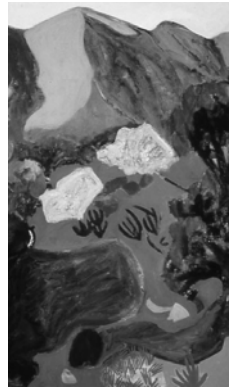


acoustical and engineering testing of his instrument designs. Stan's Stradivari 'Grande' violin model, which has been nicknamed *The Max*, took first-place award overall for tone, workmanship and varnish at the VMAAI (the oldest violin makers' association in the US) in 2002.

---

### Terry Lee Heller, 1233 Goldenrod NE

Medium: Oil



Terry studied art at The Tyler School of Art in Philadelphia and Queens College in New York. She has exhibited in group shows in New York and New Mexico, and has had several solo exhibitions at Coleman Gallery in Albuquerque. Whether a painting begins with an idea from within or a view from the world, Terry always ends up attending to the formal concerns of the piece above any story or content as such. Despite its somewhat abstract appearance, her work is narrative.

---

### Ralph Rudolph, 1044 Red Oaks Lp NE

Medium: Ceramic

Ralph has done artwork of all types all his life, exhibiting at galleries in Pennsylvania. As a juried artist at the Nob Hill Gallery in Albuquerque, he has concentrated on ceramic wall art as an unusual medium combining color, texture, and form.



---

### R. Peter Buttner, 1151 Marigold NE

Medium: Pencil and Watercolor

Peter has lived in Sandia Heights for over 20 years. He taught for the U.S. Navy and in public schools. There are no rulers or straight edges used—it is all in freehand using either a postcard or a photo. He concentrates on European scenes, but does cowboy art also.



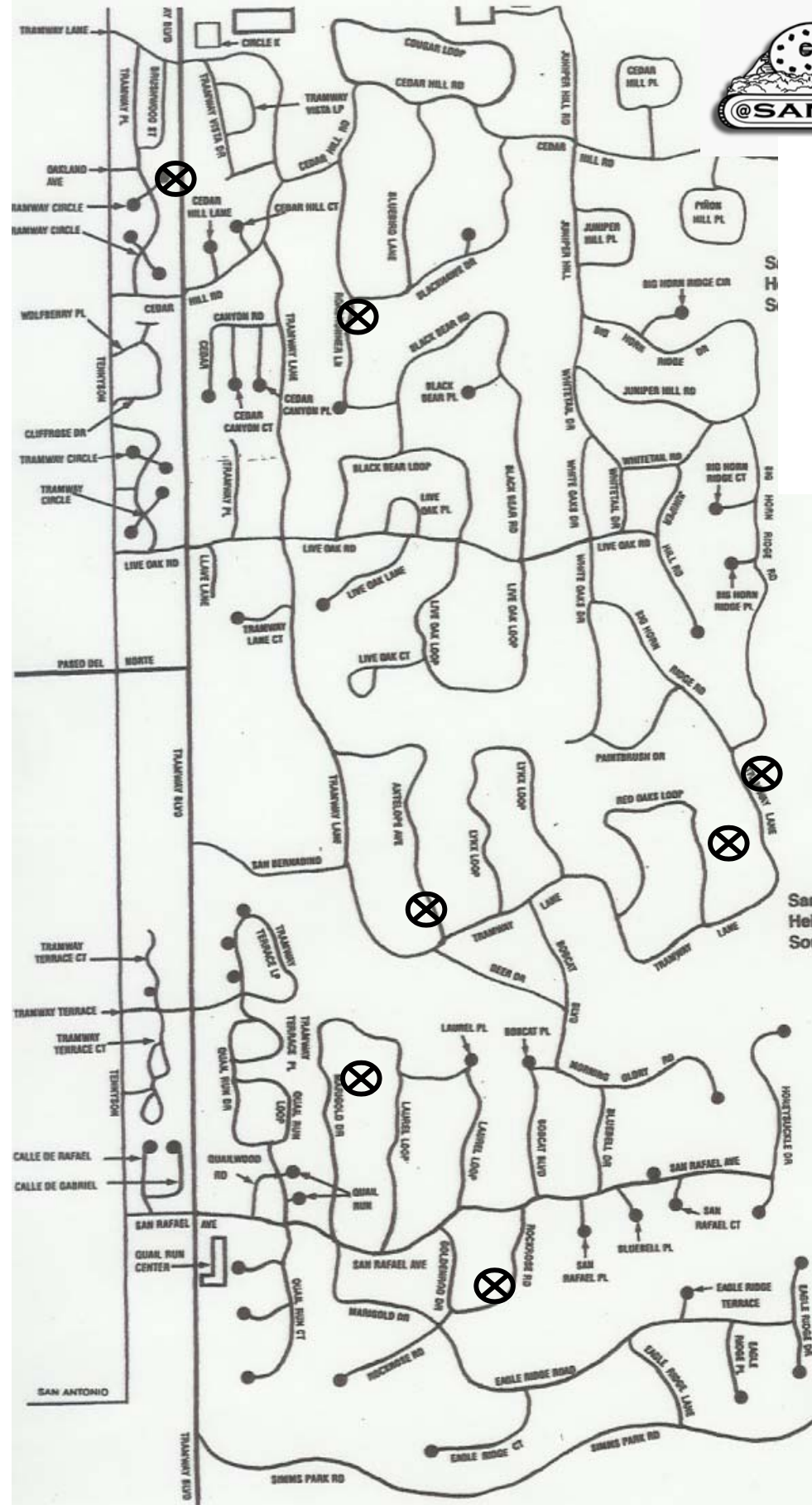


**SUNDAY**  
**October 24, 2004**  
**1:00-5:00 PM**

**First ArtsView @ Sandia Heights**

**All Sandia Heights residents and their guests are welcome to visit the exhibits by 7 artists:**

- 1- Don DeGasperi  
975 Antelope
- 2- Lynda Burch  
369 Big Horn Ridge Dr.
- 3- Linda Manion  
2876 Brushwood St.
- 4- Stanley Schmidt  
656 Roadrunner Lane
- 5- Terry Lee Heller  
1233 Goldenrod
- 6- Ralph Rudolph  
1044 Red Oaks Lp
- 7- R. Peter Buttner  
1151 Marigold



## Traffic, Safety, & Environment Committee

By Mark Boslough

I thank those of you who have sent in comments regarding the traffic calming devices recently installed by the county on San Rafael. As we announced in the September issue of the Grit, these devices (called “chokers”) were placed due to the efforts of the Bernalillo County Fire Department and the Public Works Department.

The SHHA and Bernalillo County are soliciting input from residents of the immediate neighborhood to determine the effectiveness of the devices. In particular, the county would like to know how well they reduce the frequency of extreme speeding that puts pedestrians at risk on this residential street.

The county will be collecting quantitative data on safety and traffic flow on San Rafael during the 3-month trial period. This data will be presented to residents at the January board meeting of the SHHA.

Sandia Heights is unlike most neighborhoods. Our roads are shared by pedestrians, bicyclists, automobiles, (and even skaters and skateboarders). They are narrow and curvy, and have speed limits that are lower than many residents wish to drive. These properties put special demands on the Traffic, Safety, & Environment Committee to keep our residents and environment safe. If you have concerns please attend the Town Meeting.

### SHHA MEMBER CLASSIFIEDS

(Free for SHHA members as space allows)

<p><b>Needed: Experienced babysitter</b> w/own transportation for a 16 mo. old baby girl. Need for early Friday evenings and some weekends. Contact Christi 315-0215</p>	<p><b>HOUSECLEANING</b> The holidays are coming! For House cleaning and ironing call Dora - 332-3571. 7 yrs experience &amp; references from Sandia Heights residents can be provided upon request.</p>
<p><b>Lights in the Heights</b> Electric Luminaria set available at wholesale price of \$13.25/set. To order call Kit at 856-3667</p>	<p><b>Call Heather for Babysitting</b> Reliable, have transportation &amp; references. Call 796-0601</p>



### Executive Committee

Ralph Rudolph - President  
Larry Greher – Vice President  
Cheryl Iverson – Treasurer  
Ed Whitten - Secretary

### Board Members

Kerney Bolton  
Mark Boslough  
Thomas Coyne  
Larry Desonier  
Jim Erspamer  
Rick Fairbanks  
Bob Francis  
Kenneth Hook  
William McCall  
Anton Salem  
Mona Lee Schilling  
Victoria Smidt  
Frank Soper  
Marsha Thole  
Wendy Wells

### Office Staff

Lena Martinez – ACC  
Administrative Assistant  
Sheraz Saint-Lôt – Publications  
& Communications Editor

### SHHA Office

2-B San Rafael  
Albuquerque, NM 87122

Phone: 505-797-7793

Fax: 505-856-8544

Web site:

[www.sandiahomeowners.org](http://www.sandiahomeowners.org)

Email:

[shha@sandiahomeowners.org](mailto:shha@sandiahomeowners.org)



**REMODELING HOMES in Sandia Heights** gives us a wonderful sense of pride. JADE ENTERPRISES, INC has been designing, building and remodeling in Sandia Heights and North Albuquerque Acres for over 20 years and we have come to know many residents in the area. We want to be sure that when you call us you are calling JADE ENTERPRISES, INC and **not** a different contractor by the name of Jade General Contractor.

**JADE ENTERPRISES, INC** is located in the Quail Run Shopping Center on the corner of San Rafael and Tramway. We are listed in the white pages as JADE ENTERPRISES, INC Design and Construction. We are also listed in the Yellow Pages under the heading "Contractors-Remodel." Jade General Contractor is listed under "Contractors-General."

Although we are not in competition with this commercial contractor, many people are calling him by mistake and never getting a call back. If you thought were calling and did not get a return call we apologize for whatever the reason behind it. If you would like to refer us to a neighbor or friend please use the word "Enterprises" and not "General Contractor." Our phone number is 856-JADE.

-Jeff Speck, President  
Jade Enterprises, Inc.

**OTHER ITEMS OF INTEREST:**

Acting on a resident's complaint, I went to Little Cloud Park and witnessed about 50 teenagers gathered in the arroyo under the Tramway Blvd bridge. They were having fun doing stunts on their bikes, but they were also drawing graffiti and discarding trash including beer cans in people's yards. *This is illegal! We will be working with the Sheriff to stop this activity.* **Parents: DO YOU KNOW WHERE YOUR TEENAGERS ARE?**

**Political signs:** For the most part, our covenants do not bar political signs, but they  
*The GRIT*

do litter the neighborhood. Please take them down and keep Sandia Heights natural and beautiful.

**HOUSE DISTRICT 22 STATE REPRESENTATIVE (elect)**

-Kathy McCoy

As your new State Representative (elect), I am writing to introduce myself and to ask for your help in ways to keep connected to your area. With a mountain in the middle of it, House District 22 presents a logistical challenge: in the Sandia Heights area, the southern boundary is San Bernardino; the northern boundary is the Tierra Monte subdivision; there is a small strip just on the west side of Tramway, then it goes east to the mountain. The rest of my district includes the East Mountain area (including Carnuel), parts of Edgewood, and Placitas. So I have parts of three counties rather spread apart. Needless to say, I'll be putting some mileage on my car to stay in touch with people.

I am extremely grateful to the folks at *The Grit* who allowed me to get this message out. I have no opposition in November, so I am using this time to get to better know the people in my district and learn their concerns. To that end, I am building an e-mail distribution list. 1) to keep you informed of issues that affect you and the state; 2) to seek your opinions on issues that come before the state legislature; and 3) to give you a fast and relatively painless way to reach me regarding your concerns.

If you are interested in being included on the list, please e-mail me: [Katrina@swcp.com](mailto:Katrina@swcp.com). For those who would rather call, my phone is 281-9540. Finally, I would like to say how profoundly honored I am to have been elected to fill this seat. Having worked for two years as the now retired Representative Ron Godbey's aide in Santa Fe, I learned a great deal, but I'll need your input to know how to best represent you. I encourage you to contact me.

## **Letters to the Editor**

The comments and opinions expressed do not necessarily represent the view of the SHHA.

### **Bike Etiquette**

I ride my bike on the Tramway Lane trail to Elena Gallegos 3-4 times a week. At least once a week I have to ask people to move out of the entrance and exit paths to the trails. It is nice to see someone that you know when you are out working out but it is very rude and inconsiderate to block the trail while engaged in conversation, so please move off to the side to continue your socializing. Also, those of you with small children - especially children on bikes – keep them with you. I came around a corner last week and almost hit a young child on a bicycle head on. He was on the wrong side of the trail with his head down, not watching where he was going. Last year, a woman in our complex was riding her bike and was hit by another cyclist. She suffered a fractured pelvis and was disabled for 6 months. I do not want anyone else to get hurt, especially a young child, so please practice trail etiquette and watch your children.

-Deb Boehme, Resident

### **Cats**

I am an agitated homeowner. On Quail Run Drive we see many cats these days and most are using my yard at 2014 as their dumping space. It sure takes the joy out of gardening and I have had to stop feeding the birds since these cats catch and eat birds, too. Cats should be kept at home. Keeping pets at home makes for good neighbors, I think. Is there a solution or should I become the first SHHA member with a pet coyote in my yard?

-Phyllis Cabbage, Resident

## ***Gardener's Calendar by Dan Caudillo***

### ***Mid October***

- ❖ Balloon Fiesta time is here.
- ❖ Harvest tomatoes before the first freeze. Put green tomatoes in a sunny window to ripen.
- ❖ Last chance to plant peony.
- ❖ This is an optimum time to plant bulbs before the ground freezes and selection becomes poor. Plant various bulbs such as tulips, daffodils, crocus, hyacinths and paper whites.

### ***Late October***

- ❖ The first killing frosts usually arrive by now.
- ❖ If so, cut back on watering frequency and water later in the day such as 9:00 or 10:00 A.M.
- ❖ If you have an outdoor pond, shut off the pump and remove it so that freezing doesn't damage it.
- ❖ Halloween is Monday, October 31<sup>st</sup>. By the way, Daylight Saving Time ends today so set your clocks back one hour.
- ❖ What's blooming in October? Abelia, roses, and Russian sage (shrubs); Cherry sage, coral bells, hummingbird trumpet, maximillian sunflower, mountain aster, bedding asters, red valerian, regal mist, and Mexican evening primrose (perennials); Liatris and canna lily (bulbs); Dianthus, snapdragons, pansy, ornamental kale, and English primrose.

### ***Early November***

- ❖ This is a great time to begin your fall/winter garden cleanup. Cut perennials to the ground, shape evergreen and deciduous shrubs, and rake fallen debris.
- ❖ Cut a firebreak around your house by trimming dormant grasses to the ground 20 feet away from the house or other structures.
- ❖ Time to feed lawn and other outdoor plants with a winterizer fertilizer.
- ❖ Set water lilies to the deepest part of the pond to prevent them from freezing.

PRESORTED STD.  
U.S. POSTAGE  
PAID  
PERMIT #375  
ALBUQUERQUE, NM

Sandia Heights Homeowners Association  
2-B San Rafael, NE  
Albuquerque, NM 87122



# SANDIA HEIGHTS HALLOWEEN PARTY FOR KIDS! FREE!

At the Church of the Good Shepherd  
7834 Tennyson Street NE

Friday Oct 29, 4 to 6 PM

Sponsored by the SHHA Membership Services Committee

Toddlers to Teens welcome

**FOOD, GAMES, ENTERTAINMENT**

Attention parents: please help support a kid friendly neighborhood. We need volunteers to help out with this activity. Please call Vicki Criel at 614-3333 or e-mail her at [vcriel@comcast.net](mailto:vcriel@comcast.net) if you can help with the fun.

WRAP THE MUMMY IS BACK!

